

General Info

Pedro Juan Caballero, PRY

S 22° 38.5' W 55° 49.9' Mag Var: 13.3°W

Elevation: 1873'

Public, IFR, Customs

Time Zone Info: Caracas, La Paz Time GMT-4:00 no DST

Runway Info

Runway 03-21 5906' x 98' asphalt

Runway 03 (27.0°M) TDZE 1870'

Lights: Edge

Runway 21 (207.0°M) TDZE 1873'

Lights: Edge

Communications Info

Pedro Juan Radio **120.5**

Notebook Info

SGPJ

JEPPESEN
 27 APR 01 (16-1)

**PEDRO JUAN CABALLERO,
 PARAGUAY**

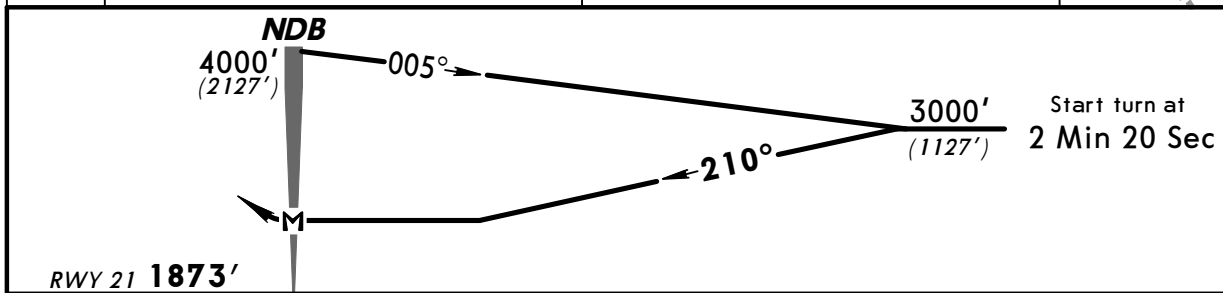
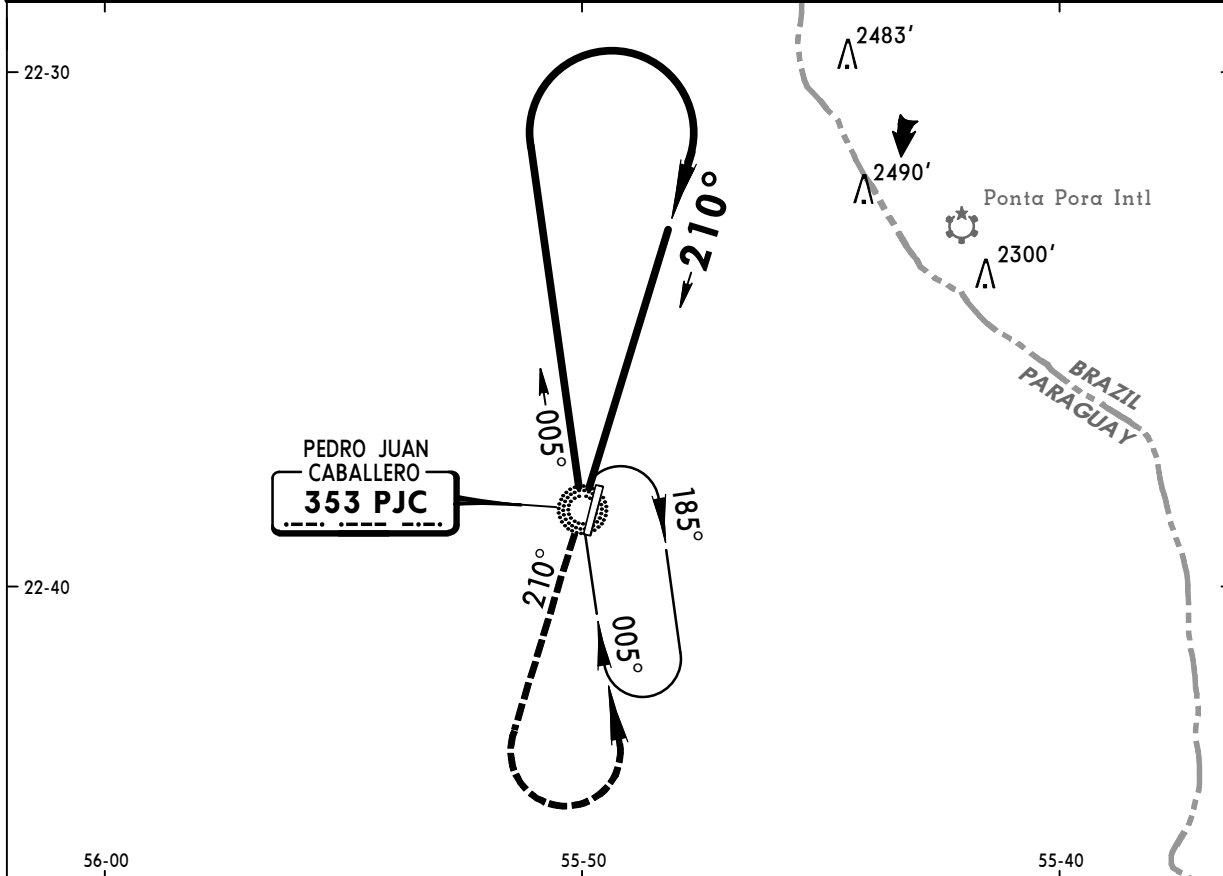
PROF DR PAC AUGUSTO R FUSTER

PROCEDURE ALFA NDB Rwy 21

PEDRO JUAN Radio (AFIS) 120.5

BRIEFING STRIP™

NDB PJC 353	Final <i>Apch Crs</i> 210°	No FAF	MDA(H) 2300' (427')	Apt Elev 1873' RWY 21 1873'	4000'
MISSED APCH: Climb on 210° bearing to 4000', then turn LEFT to PJC NDB and hold.					
Alt Set: hPa (IN on req) Rwy Elev: 67 hPa Trans level: By ATC Trans alt: 4000' (2127')					MSA PJC NDB



<i>Gnd speed-Kts</i>	70	90	100	120	140	160	PAPI-L	4000'	on	210°	LT	PJC 353
<i>Rate of descent on final (feet/min)</i>	550											
<i>MAP at NDB</i>												

STRAIGHT-IN LANDING RWY 21		CEILING REQUIRED	CIRCLE-TO-LAND
MDA(H) 2300' (427')			
	<i>CEILING-VISIBILITY</i>	<i>Max Kts</i>	<i>MDA(H) CEIL-VIS</i>
A	500' - 1600m	100	2300' (427') 500' - 1600m
B	500' - 2000m	135	2300' (427') 500' - 2400m
C	NA	D	NA

PANS OPS

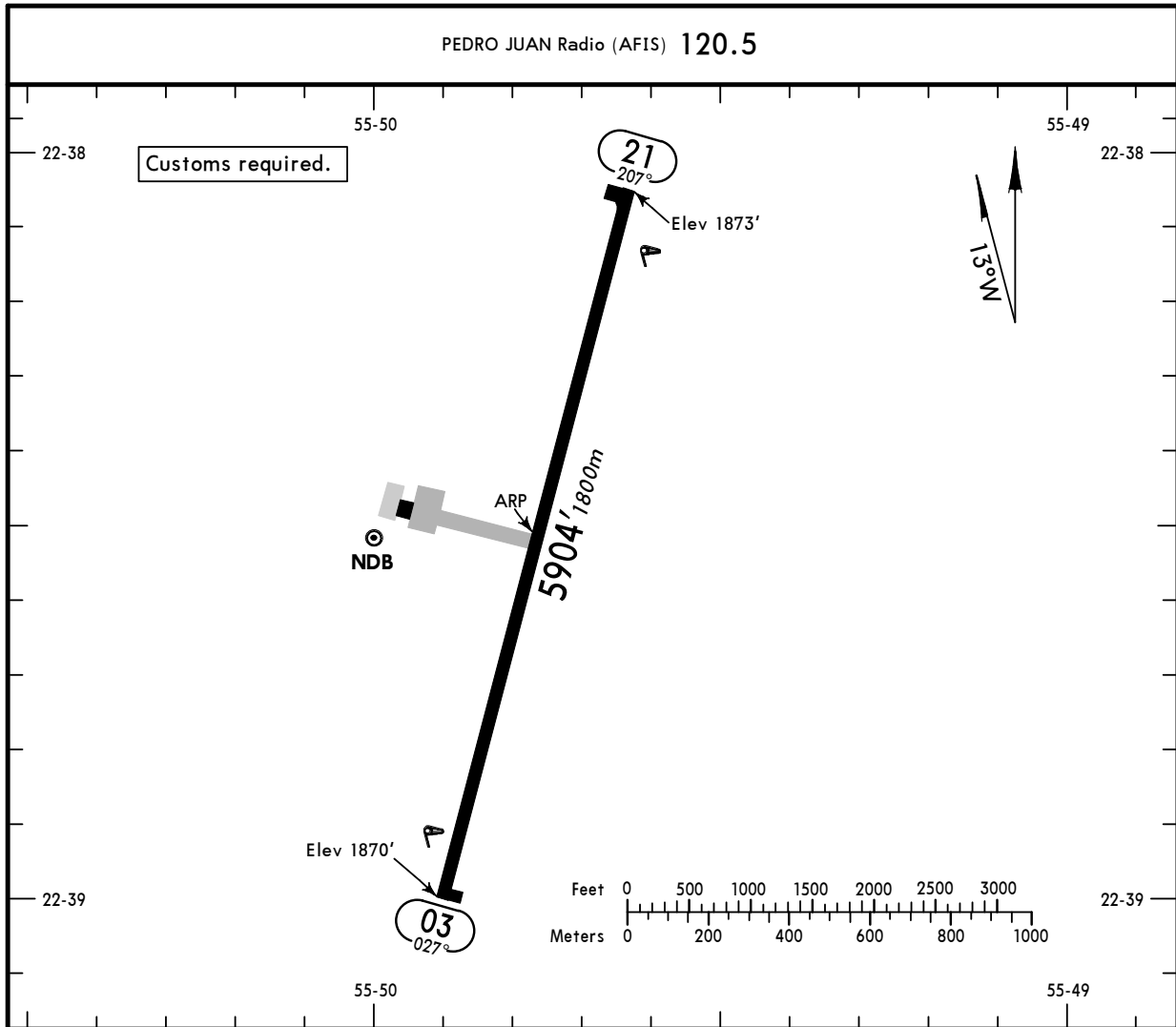
CHANGES: Missed approach altitude.

SGPJ

Apt Elev **1873'**

JEPPESEN 27 APR 01 **(16-1)**

**PEDRO JUAN CABALLERO,
 PARAGUAY**
 PROF DR PAC AUGUSTO R FUSTER
 S22 38.5 W055 49.8



ADDITIONAL RUNWAY INFORMATION					
RWY		USABLE LENGTHS			WIDTH
		Threshold	Landing Beyond Glide Slope	TAKE-OFF	
03	RL				98'
21	RL PAPI-L				30m

--	--	--	--	--	--

JAR-OPS		TAKE-OFF			
AIR CARRIER		AIR CARRIER (FAR 121)			
LVP must be in Force All Rwys RCLM (DAY only) or RL		All Rwys RCLM (DAY only) or RL		All Rwys Adequate Vis Ref	
A				2 Eng	RVR 500m VIS 400m
B	250m	400m		3 & 4 Eng	
C					
D	300m				

SGPJ

JEPPesen

**PEDRO JUAN CABALLERO,
 PARAGUAY**

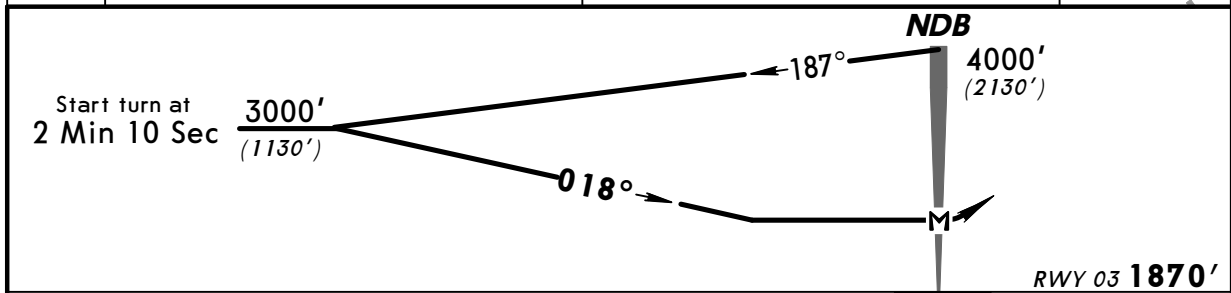
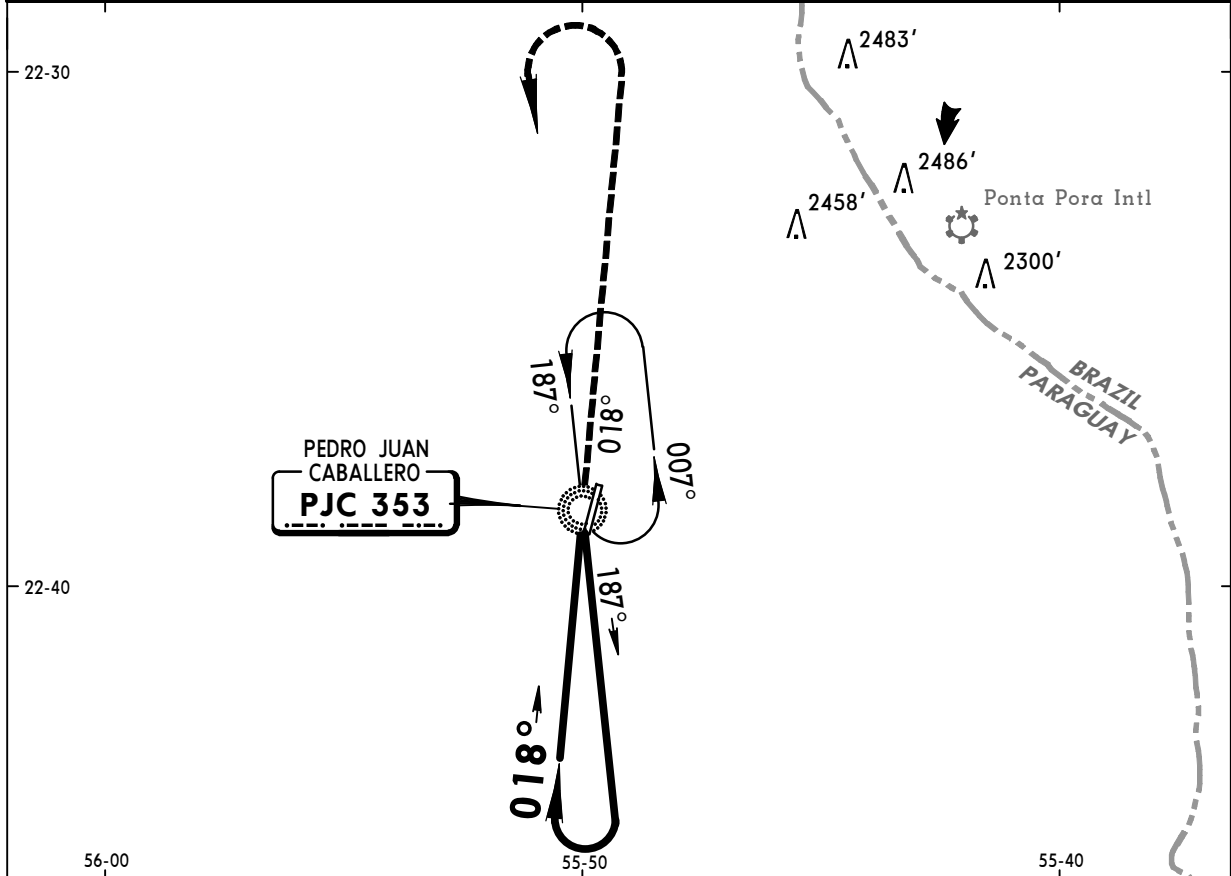
15 SEP 00 (16-2)

PROF DR PAC AUGUSTO R FUSTER

PROCEDURE BRAVO NDB Rwy 03

BRIEFING STRIP™

PEDRO JUAN Radio (AFIS)					<div style="border: 1px solid black; border-radius: 50%; width: 100px; height: 100px; margin: 0 auto; display: flex; align-items: center; justify-content: center;"> 4000' </div>
NDB PJC 353	Final Apch Crs 018°	No FAF	MDA(H) 2300' (430')	Apt Elev 1873' RWY 03 1870'	
MISSED APCH: Climb on 018° bearing to 4000', then turn LEFT to PJC NDB and hold.					
Alt Set: hPa (IN on req) Apt Elev: 67 hPa Trans level: By ATC Trans alt: 4000' (2127')					MSA PJC NDB



Gnd speed-Kts	70	90	100	120	140	160	4000'	on	018°	← LT	PJC 353
Rate of descent on final (feet/min)	550						↑				
MAP at NDB											

STRAIGHT-IN LANDING RWY 03				CEILING REQUIRED	CIRCLE-TO-LAND	
MDA(H) 2300' (430')						
	CEILING-VISIBILITY	Max Kts	MDA(H)	CEIL-VIS		
A	500' - 1600m	100	2300' (427')	500' - 1600m		
B	500' - 2000m	135	2300' (427')	500' - 2400m		
C	NA	D	NA			

PANS OPS

CHANGES: New procedure.